



MLX QUARTZ

IMMERSIVE ALPHA QUARTZ EXPERIENCE





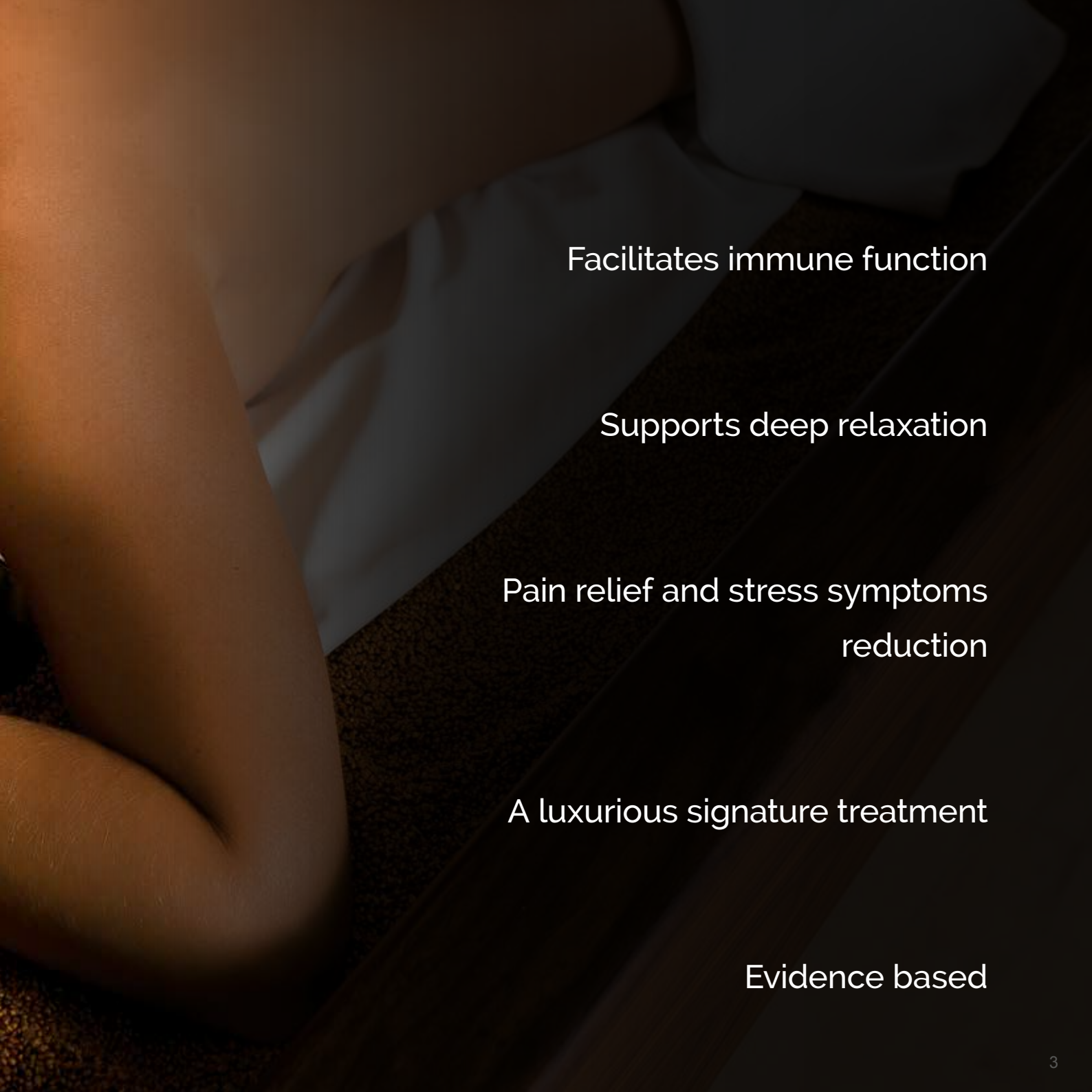
MLX QUARTZ

The Ancient art of sand bathing, re-invented!

The luxurious design of the MLX Quartz offers an immersive alpha quartz experience that promotes deep relaxation, sensory stimulation, and a modern detox for the ultimate 21st century wellness experience. The warm quartz sand cocoons the body, and feelings of stress symptoms melt away as the bed gently inverts and the built-in massage system works to release tension and promote better circulation. The MLX Quartz supports pain relief states and promotes immune sys-

tems function, leaving you feeling refreshed, rejuvenated, and peaceful. The gentle yet deeply warming effects enhances the integration of signature treatments, massages and the use of sand poultices - creating a premium experience for the guest.

Elevate your clients' experiences with this natural wellness treatment offering a much-needed getaway from the stresses of daily life.

A person is lying on a massage table, receiving a massage. The background is dark, and the lighting is soft, highlighting the person's skin. The text is overlaid on the right side of the image.

Facilitates immune function

Supports deep relaxation

Pain relief and stress symptoms
reduction

A luxurious signature treatment

Evidence based



Elevated relaxation



The easy to use touch panel is embedded into the table and allows for seamless integration of controls without cables or other hazardous elements. All functions are pre programmable and can be adapted with one touch. Temperature, incline functions and dynamic massage system are all easily adjusted for an optimal and continuous transformative experience.



Also known as zero gravity, inversion treatment creates an ideal stretch that improves spinal health and targets back pain by helping to realign the spine, rehydrate spinal discs, alleviate nerve pressure, relax tense muscles, ease stress, improve joint health and improve flexibility.



The MLX Quartz has the option of being equipped with water cushions. These can simply be placed on top of the warm quartz sand. 6 cushions will ensure that the water is evenly distributed, providing a warm, stable and supremely comfortable surface.

The Spa Ambience Light is available as an option inside the frame to illuminate the water cushion and further enhance the mood in the treatment room.



This function provides a fragrant enhancement to the experience, to transport the guest to a realm of heavenly scents and ultimate relaxation. With three integrated fragrance chambers that can be easily controlled via the touch display, each chamber can be filled with a different scent, allowing the creation of unique and ethereal fragrance combinations.



Enhance the treatment experience with the fully integrated massage system, which provides a gentle massage for the neck and back. This system is pre-programmable and features air cushioning that can inflate or deflate to create a wave-like sensation for guests to enjoy simultaneously with a traditional massage or other body treatment.



Making treatment rooms look clean and organized is simplified with Gharieni's spacious storage compartments situated at the bottom of the treatment bed. These compartments are big enough to accommodate all the necessary items for treatments and can be concealed and kept out of view when not in use.



Illuminated and heated salt tiles which generate negative ions to purify the air, can be optionally integrated into the sides of the spa table.



Incorporating advanced technology into equipment is a hallmark of Gharieni, and the integration of LED lighting into the MLX Quartz collection allows guests to be fully immersed in the treatment with subtle lighting features.



The quartz sand can be tailored to individual preferences, with the choice of natural or color coated options. For a truly extravagant experience, clients can choose from amber or Persian blue salt blends.

MLX QUARTZ

"It brought back memories of being at a beach...a grounding, very grounding experience"

Yesenia, Spa Director



Features:

- Made of real wood
- Filled with alpha quartz sand
- Continuously adjustable heating system
- Two lifting columns for height and inclination adjustment
- Storage compartment and two drawers in the base
- Integrated face cradle made from soft PU upholstery
- Optional, foldable upholstery overlay for massages
- Standard upholstery color: White. Other colors from our color collection for an additional charge
- Optional scent diffuser
- Optional Dynamic Flow System
- Optionally with salt tiles inserts in the frame



- Height: approx. 65 - 90 cm / 25,6 - 35,4 in
- Length: 216 cm / 85 in
- Length Square XL: 226 cm / 89 in
- Width: 86 cm / 33,9 in
- Lifting capacity: 130 kg / 287 lbs
- Load capacity of the bed surface: 150 kg / 331 lbs



Foldable upholstery for massage

“You can even feel the blood circulation is like, changing, so one of the best I can say!”

Berfu, Spa Manager



QUARTZ POULTICE

The sand poultices are a great addition to the MLX Quartz as they come in various sizes to allow for diverse heat treatments.

Quartz Poultice Warmer incl. 10 quartz poultices

The Quartz Poultice Warmer maintains a consistent temperature for the quartz sand poultices. The heating system can be effortlessly managed from the front panel and an LED indicator displays the temperature status. The real wood frames are designed to match the MLX series, adding to the ambiance of your space. The cover aids in efficient heat storage and the larger model can even serve as a tray for the poultices.

Features:

- Table device for keeping the sand poultices warm
- Also suitable for heating hot-stones
- Made of real wood
- In two sizes
- Filled with alpha quartz sand
- Continuously adjustable heating system
- Including four large, two medium, and four small sand poultices
- Practical cover panel to prevent heat loss inside



Quartz Poultice Warmer, large

- Height: approx. 28,5 cm / 11.2 in
- Length: 63,5 cm / 25.0 in
- Width: 23,5 cm / 9.3 in



Quartz Poultice Warmer, small

- Height: approx. 28,5 cm / 11.2 in
- Length: 45 cm / 17.7 in
- Width: 23,5 cm / 9.3 in



FEATURED CLIENTS



The Lamp Hotel, Sweden

Photo: © The Lamp Hotel



Park Hyatt Mallorca, Spain

Photo: © Park Hyatt Mallorca



Island Spa Catalina, USA

Photo: © Island Spa Catalina



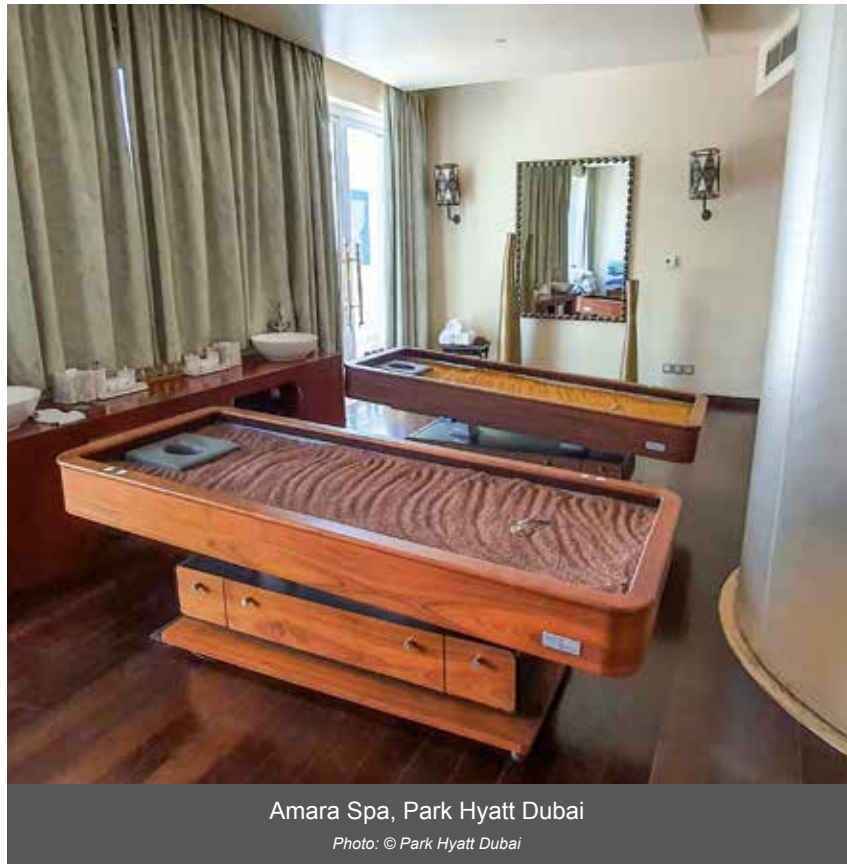
FIVE Palm Jumeirah, Dubai

Photo: © FIVE Palm Jumeirah



La Butte aux Bois, Belgium

Photo: © La Butte aux Bois



Amara Spa, Park Hyatt Dubai

Photo: © Park Hyatt Dubai

EXPERIENCE THE PSAMMO CONCEPT HERE & IN MANY MORE PLACES.



Moers, Germany | Sales + Showroom // Gharieni Group GmbH • Gutenbergstr. 40 • D-47443 Moers
Moers, Germany | Distribution + Service // Gharieni Group GmbH • Am Schürmannshütt 24 • D-47441 Moers
Tel: +49 - (0) 28 41 - 88 300 - 0 • Fax: +49 - (0) 28 41 - 88 300 - 333 • www.gharieni.de • info@gharieni.com

Ettlingen, Germany // Gharieni Süd GmbH • Siemensstr. 11 • D-76275 Ettlingen
Tel: +49-(0)7243-3322-363 • Fax: +49-(0)7243-3322-391 • ettlingen@gharieni.com

Nederweert | BeNeLux // Gharieni Nederland BV • Hulsenweg 14 • NL-6031 SP Nederweert
Tel: +31 (0) 495 - 63 30 36 • Fax: +31 (0) 495 - 62 66 63 • www.gharieni.nl • info@gharieni.nl

Dubai | UAE // Gharieni Middle East FZ-LLC • Park Hyatt Hotel • Dubai Creek Club St., P.O. Box 333203 • Dubai
Tel: +971 (0) 4 602 1819 • www.gharieni.ae • info@gharieni.ae

Aventura | USA // Gharieni USA Inc. • JW Marriott Miami Turnberry Resort & Spa • 19999 West Country Club Drive
Aventura Florida 33180 • Tel: +1 (855) 378 4772 • www.gharieni.com • info@gharieni.com